

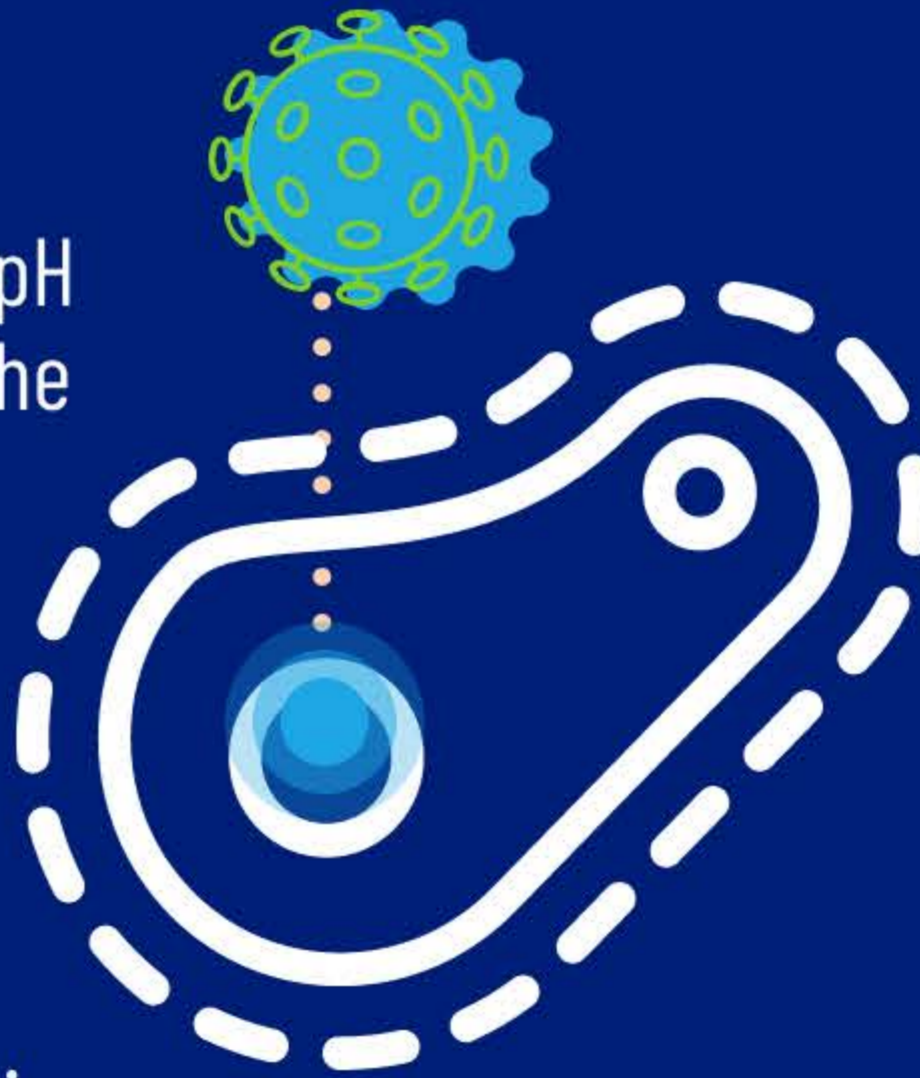
# HYDROXYCHLOROQUINE (HCQ) FOR COVID-19

Information for Pharmacists

## 1 MECHANISM

HCQ increases the pH of lysosomes and the Golgi apparatus within cells, disrupting viral replication

It also prevents receptor glycosylation



## 2 DOSING

No recommended adjustments in renal or hepatic impairment

Can be crushed or compounded to suspension



## 3 ADVERSE REACTIONS

Retinal damage with long-term use (month-year) or high-dose (>5mg/kg)

Check QT interval:  
-450-500 msec- daily EKG  
->500 msec AVOID!

GI disturbances (take w/ food)  
Hypoglycemia

Extrapyramidal reactions



## 4 DRUG-DRUG INTERACTIONS

- Dapsone or G6PD-deficiency may increase hemolytic reactions
- Additive QTc prolongation
- Additive hypoglycemia

- Antacids decreased absorption (4 hr apart)
- CYP 3A4 and 2C8 inhibitors decrease efficacy/metabolism

